



TEKREND

## RENDER CARRIER BOARD

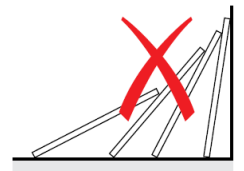
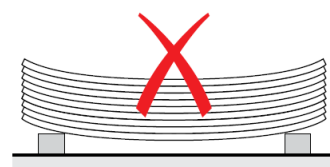
TekRend Render Carrier Board is an A1 non-combustible exterior grade direct render carrier board with mesh reinforcing facings. It is one the first boards of its kind to combine the benefits of Ordinary Portland Cement into a light weight 'score & snap' building board that is quick to install.

### KEY FEATURES

- TekRend Render Carrier Board can be readily fixed with recommended screws and easily cut with a utility knife.
- It is UKCA marked according to BS EN 12467:2012+A2:2018 "Fibre cement flat sheets".
- TekRend Render Carrier Board is manufactured with a unique process combining Ordinary Portland Cement, and a reinforcing matrix that enhances the workability and handling properties over traditional fibre cement boards.
- It is manufactured in 12.5mm thickness and has a taper on the two long edges of the outer face.

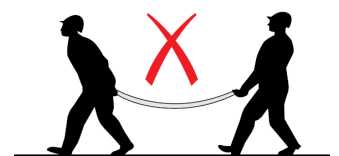
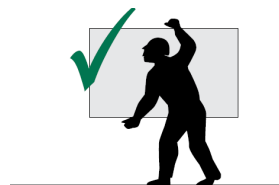
### DELIVERY AND STORAGE

- Boards should be received in a dry state with pallets protected from weather with plastic sheeting or similar.
- Boards should be stored on flat, dry pallets elevated on skids/battens sufficiently from ground level to prevent board wetting.
- If boards are stored on site for a long period of time they should be kept under cover/ indoors if possible.



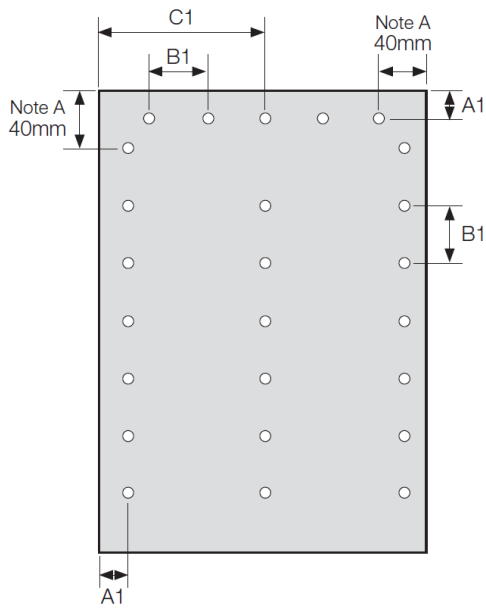
### Handling

- When manually moving boards they should be carried in a vertical orientation.
- A manual handling risk assessment should be undertaken prior to handling the product.





## INSTALLATION INSTRUCTIONS



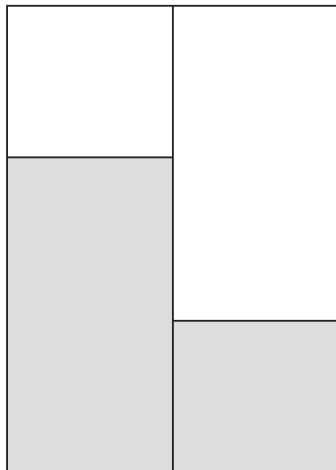
Install with stainless steel countersunk head screws adapted to substrate. Minimum - length 36mm and diameter 3.5mm.

**A** = 40mm

**A1** = 15mm

**B1** = ≤250 mm

**C1** = 600mm



### NOTE:

- 4 way joints are not recommended.
- Minimum board width should not be less than 600mm.
- TekRend Render Carrier Board can be installed in either 'portrait' or 'landscape' orientation.
- TekRend Render Carrier Board should be kept dry prior to render system application.
- A ventilated cavity of minimum 50mm is required to the rear of the board assembly.
- See installation detailing at specific zones later in guide.

### PROVISION FOR EXPANSION

Within a single frame assembly up to 6000mm x 6000mm maximum, gaps between boards should be 3-4mm.

Where 2 frame assemblies meet, expansion gaps should be provided of 10mm.

### BATTEN TYPE

Timber battens should be selected as suitable for exterior use and be suitable for the mounting of buildings boards.

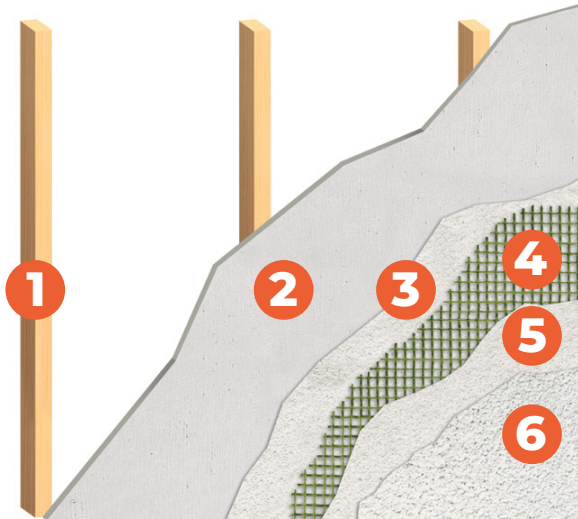
Minimum dimensions 50mm x 50mm

### COMPATIBILITY OF RENDER FINISHES

In all instances TekGroup strongly recommends that the manufacturer of the proposed render system is consulted to check for compatibility and any specific product application details. TekGroup should be contacted in the event of any queries arising.



## INSTALLATION INSTRUCTIONS *CONTINUED*



### TYPICAL RENDER SYSTEM COMPOSITION

Ventilated timber construction - render only

1. Suitably treated Timber Stud
2. TekRend Render Carrier Board
3. Render Base Coat
4. Reinforcing Mesh
5. External Base Coat
6. Final Render

## CUTTING

TekRend Render Carrier Board can be easily score and snapped with a traditional utility knife.

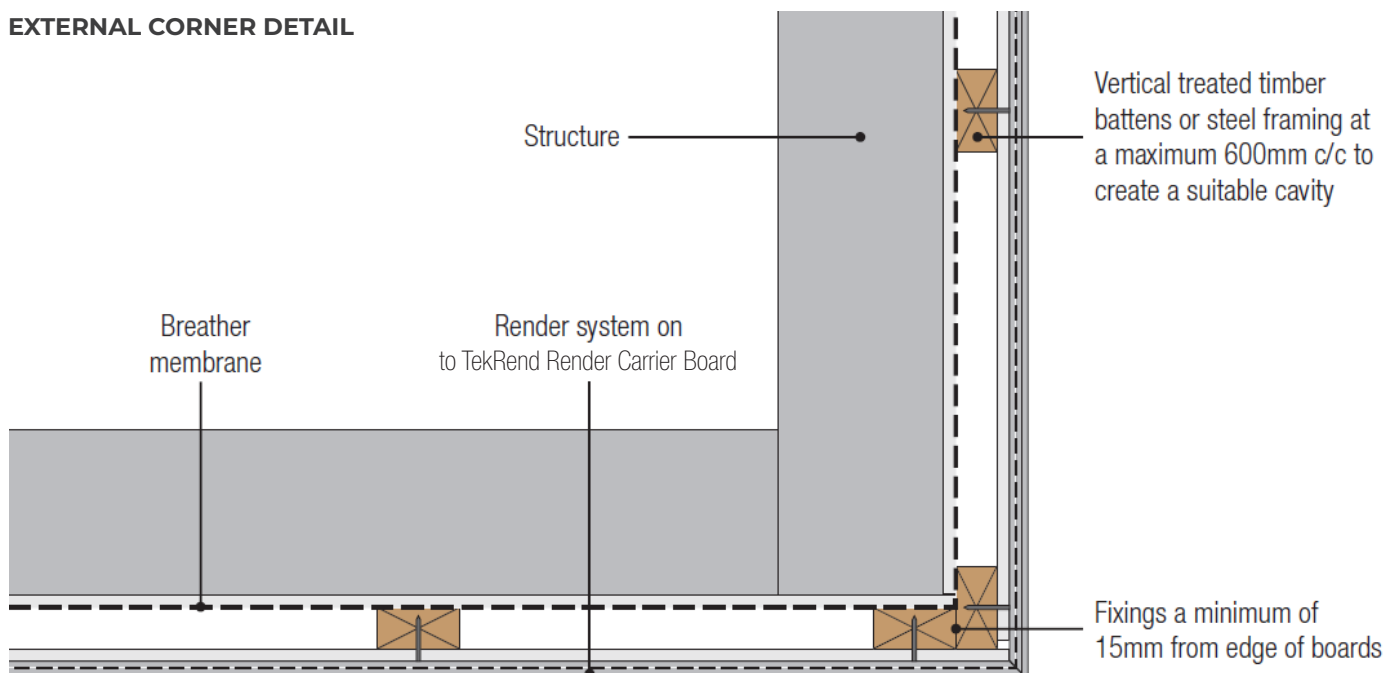
Use a straight edge and make initial cut to the face of the board.

Apply pressure to cut piece to open the joint up and then run the knife back along the scored line to cut the mesh to the reverse side of the panel to complete cut.



## DETAIL SCHEMATIC

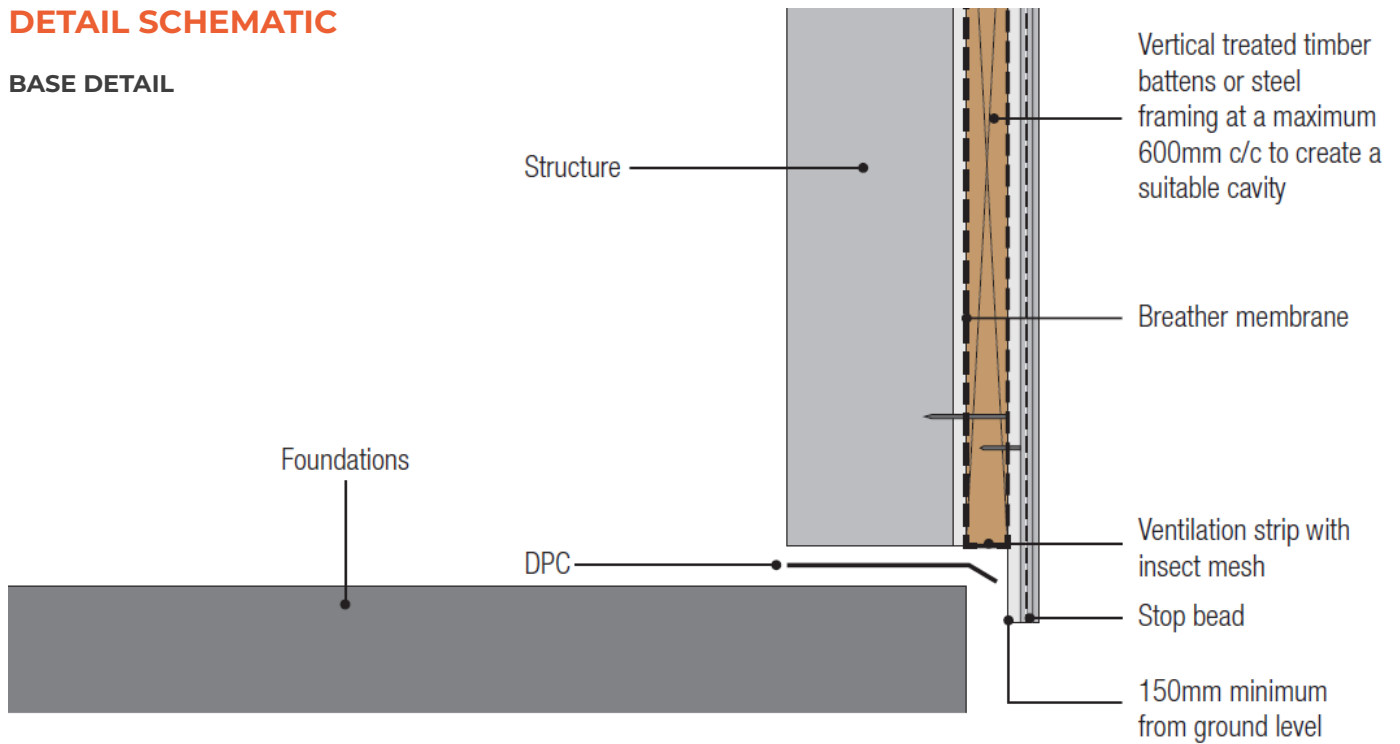
### EXTERNAL CORNER DETAIL





## DETAIL SCHEMATIC

### BASE DETAIL



## DETAIL SCHEMATIC

### HEAD DETAIL

