

Cavity Wall Lintel - CG70/100

Open back lintel

Benefits

Easy-to-use open back profile

Allows masonry to be built up continuously on both outer and inner leaf

Materials used in Lintels

The **CG**, **CH** and **CX** ranges are formed from galvanised steel, then powder coated

Duplex corrosion protection

Ensures optimum durability and longevity

Built-in DPC

Saves time in construction and means cavity is easy to clean without risk of damage to DPC

Integral Plaster key

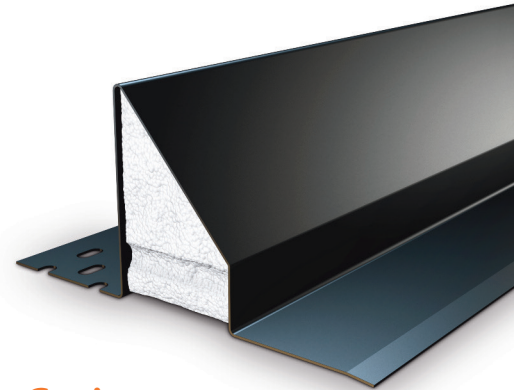
With staggered slots applied to the inner flange and ribbed underside of insulation (perforated steel baseplate on **CH** and **CX** range)

Continuous insulation

Maximising thermal efficiency, minimising cold bridging

Features:

- Triangulated masonry load
- Supporting uniformly distributed masonry load
- Supporting uniformly distributed timber floor and roof loads
- Suitable for fair faced inner leaf masonry



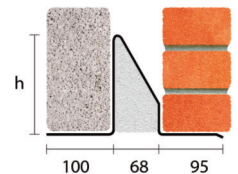
70-85mm Cavity 100-115mm Inner Leaf

All ratios are shown inner to outer

Standard Duty



Standard lengths are available in 300mm increments.



CG70/100

Standard lengths (mm)	900-1500	1800	2100	2400	2700	3000-3600
SWL 1:1/3:1 (kN)	15	18	20	22	26	26
Weight (kg/m)	6.0	6.0	8.1	8.7	10.0	12.5
Nominal height 'h' (mm)	140	140	160	180	220	220

i The SWL (safe working load) is based on the total UDL (uniform distributed load) over maximum span using 150mm end bearings.

Note: Whilst the above information is intended to offer general guidance regarding typical applications, it should not be considered as comprehensive. Requirements not fully covered by the above should be referred to our technical services department for individual consideration.

Catnic

Pontypandy Industrial Estate
Caerphilly
CF83 3GL
T: 029 2033 7900
F: 029 2086 7796

09/2022

www.catnic.com

Care has been taken to ensure that the contents of this publication are accurate, but Tata Steel Europe Limited and its subsidiaries, which includes Tata Steel UK Limited, do not accept responsibility or liability for errors or information that is found to be misleading. Before using products or services supplied or manufactured by Tata Steel Europe Limited and its subsidiaries, customers should satisfy themselves as to their suitability.

© Copyright 2022 Tata Steel UK Limited.